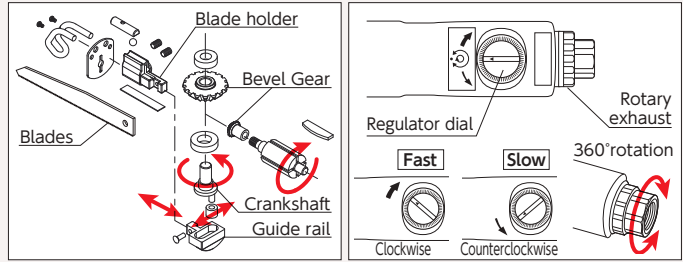


The high-powered, unstoppable reciprocating saw

The reduced vibration from the Air Motor and Gear driven system of the reciprocating air saw allow for a smoother, more comfortable cut. The blade is mounted on the end of the saw and the power is transmitted to the blade.

- 5300 cycle per minutes and 12 mm stroke for fast cutting.
- The blade is very stable and the cut is clean and distortion free.
- Two screws hold the blade.
- Built-in air regulator adjusts the cutting speed.
- 360 degree rotating rear exhaust.
- Safety lever to prevent accidental starting.

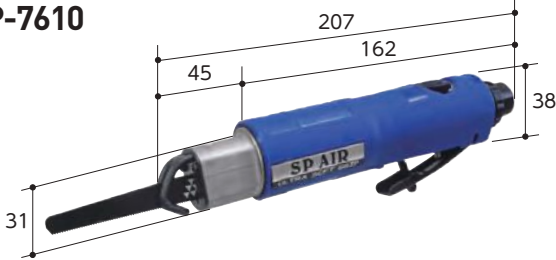


RECIPROCATING SAW

Cutting Capacity 4mm (Steel) [RECIPROCATING SAW]

- Lightweight. ● High power. ● Urethane covered cushion grip. ● Safety lever. ● Built-in power regulator. ● 360 degree rotating rear exhaust. ● Secure fixing blade with screw hole.

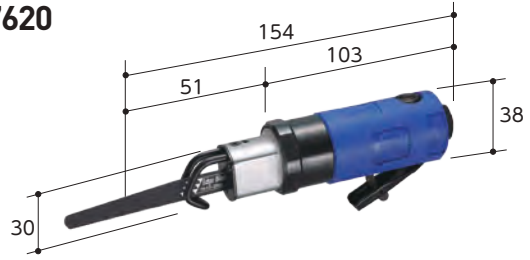
SP-7610



Cutting Capacity 2mm (Steel) [RECIPROCATING SAW]

- Lightweight. ● High power. ● Urethane covered cushion grip. ● Safety lever. ● Built-in power regulator. ● 360 degree rotating rear exhaust. ● Secure fixing blade with screw hole.

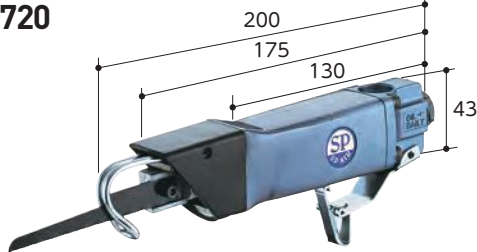
SP-7620



Cutting Capacity 1.5mm (Steel) [HIGH SPEED TYPE]

- Lightweight. ● High speed type. ● Safety lever. ● Secure fixing blade with screw hole.

SP-1720



Cutting Capacity 1.5mm (Steel) [LOW SPEED TYPE]

- Rubber cover grip. ● Safety lever. ● Dust hose included. ● Suitable for dia. 5 mm files.

SP-1730



Air Saw Blades



| EDP | PART NUMBER | SPECIFICATION | JAN (4545695) |
|--------|--------------------|---------------------------------|---------------|
| 370324 | SP-7610-200 | 24 teeth Bimetal (for HTTS) | 000709 |
| 370315 | AS-170 | 32 teeth Bimetal (for Steel) | 600020 |
| 370316 | AS-171 | 24 teeth Bimetal (for Aluminum) | 600570 |

FILE

Rasp Φ5mm [MINI TYPE]

- Light weight. ● Low speed and high torque. ● Rubber covered grip. ● Safety lever

SP-1700F



| EDP | Model No. | Grip Dia. (mm) | Stroke (mm) | Install Method | Free Speed (min ⁻¹) | Overall Length (mm) | Air Consumption (m ³ /min) | Hose Coupling | Net Weight (kg) | Accessories | JAN (4545695) |
|--------|-----------------|----------------|-------------|----------------|---------------------------------|---------------------|---------------------------------------|---------------|-----------------|---|---------------|
| 370134 | SP-7610 | 40 | 12 | Set screw H3mm | 5300 | 207 | 0.5 | 1/4" NPT | 0.6 | Blade (7610-200), Allen key (H3mm) | 002435 |
| 370170 | SP-7620 | 38 | 6 | Set screw H3mm | 11000 | 154 | 0.5 | 1/4" NPT | 0.6 | Blade (7610-200), Allen key (H3mm) | 003876 |
| 370135 | SP-1720 | 43 | 7 | Set screw H3mm | 11000 | 200 | 0.32 | 1/4" NPT | 0.48 | Blade (32T), Allen key (H3mm, H2mm) | 000806 |
| 370136 | SP-1730 | 43 | 9 | Set screw H3mm | 5000 | 240 | 0.3 | 1/4" NPT | 1.15 | Blade (32T), Allen key (H3mm) | 000813 |
| 370137 | SP-1700F | 28 | 5 | Set screw H3mm | 4500 | 180 | 0.3 | 1/4" NPT | 0.42 | Files (Round, Flat, triangular), Allen key (H3mm) | 000820 |

Air pressure: 0.62 MPa Air hose inner dia.: 9.5 mm Rear exhaust Air connector included

FASTENING

DRILLING

SANDING

GRINDING

CUTTING

HAMMERING

BEVELER